

MEDIA RELEASE

10 November - 14 December 2023



Rituals and Methods

Lynne Eastaway
Nicole Ellis
Pollyxenia Joannou

Curated by Rhonda Davis and Lisa Jones

Rituals and Methods brings together the works of Lynne Eastaway, Nicole Ellis and Pollyxenia Joannou, established artists who share the ritualisation of what it is to layer, to fold, to disassemble and reassemble in making works that distill the experiences and sensations of their interactions with the world.

At various points the rituals and methods adopted by each artist intertwine in colour, pattern, form, tone and temperament. Their works show abstraction that lends meaning to the artists' encounters of history, memory, place, family and home, and that sets their works apart from formalist abstraction.

 Grace
CossingtonSmithGallery

Abbotsleigh,
Gate 7, 1666 Pacific Highway,
Wahroonga NSW 2076

Gallery opening times:
Tuesday to Saturday 10am to 5pm

Social Media:
f <https://www.facebook.com/gcsgallery>
@gcsgalley

MEDIA contact:
Mary Faith, Lisa Jones 02 9473 7878,
gcsgallery@abbotsleigh.nsw.edu.au

High resolution images are available.

The Grace Cossington Smith Gallery is a not-for-profit gallery, run by Abbotsleigh, serving the public through free admission and a changing exhibition program. Enter via Gate 7, 1666 Pacific Highway Wahroonga.

The Grace Cossington Smith Gallery respects and acknowledges the Traditional Custodians of this land as the First People and Custodians of this country.

In a lifetime of art practice Lynne Eastaway's work is imbedded in her perceptions of her world. While primarily a non-objective artist, her paintings, drawings and sculptural forms play with ideas of formal and visual thinking. Much inspiration for her work comes from landscape, figuration and the composition and sacred geometry of past artists. Her experiences and observations are revealed in colour, in pattern, the ambiguity of edges, and in an exploration of materials - canvas, acrylic gouache, pigmented inks on handmade Japanese paper, laminated linen, cotton duck, sculptural folds – and sketchbooks.

Eastaway studied at The National Art School, Sydney before completing her Master of Fine Art (research) at UNSW. She has held solo exhibitions across Australia since 1978, having first exhibited with Sydney's historically renowned Gallery A. Eastaway had long lasting impact as an artist educator at the National Art School.



Lynne Eastaway in her Glenorie Studio 2023
Photo: Richard Glover



Left to right:
From the fold No 2 Purple, Acrylic gouache on cotton duck
Folded Blue and Earth Red, Acrylic gouache on Belgium Linen on timber box

Pollyxenia Joannou is a widely experienced artist and for more than thirty years has been a teacher of experimental drawing at the National Art School. She is known for her three dimensional and felt works in which drawing is expanded and reconceptualised. She has discarded representation and sees the world or landscape as structured architectural codes. Significant for Joannou are colour palette, and a balance of aesthetics via shapes, line, repetition, surface and the tactility of materials. For Joannou the artistic process as a 'stripping away' to reveal a quiet beauty through her observations.

Joannou's qualifications include an MA in Communication Design from Central Saint Martins in London, UK, and a BA Visual Arts Degree from the College of Fine Arts (UNSW), Sydney, Australia.



Pollyxenia Joannou in her Balmain Studio 2023
Photo: Richard Glover



Right top and bottom:
Figure in the Horizon 1, oil on canvas
Possible State of Fragility 4, oil on wood

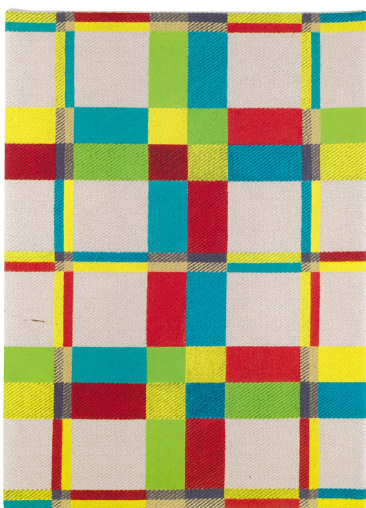


For more than thirty years Nicole Ellis has worked with found materials and colour in her dedicated inquiry in material and surface. Her materials include industrial textiles, printed papers, wrappers and urban refuse. She alters these materials with paint and other media, to fabricate works which include painting, sculpture, installation, books and video. A principle in her working method is collage and assemblage, and to this she brings her interest in issues of culture and history in relation to materiality, archaeology, architecture and abstraction. Ellis carefully considers, collects and organises these unimportant or discarded materials. In creating her works she reveals materials that are deteriorated, degraded and layered either by chance or her redesign and they often suggest traces of human touch and gesture.

Born in Adelaide, Ellis studied at the South Australian School of Art and the Tasmanian School of Art, University of Tasmania, where she received a Master of Fine Arts, in 1983.



Nicole Ellis in her Marrickville Studio. Photo: Hamish Ta-Me



Left to right:
Double-Check 1, acrylic paint on fabric
Horizontal (Red, Yellow), fabric and acrylic paint