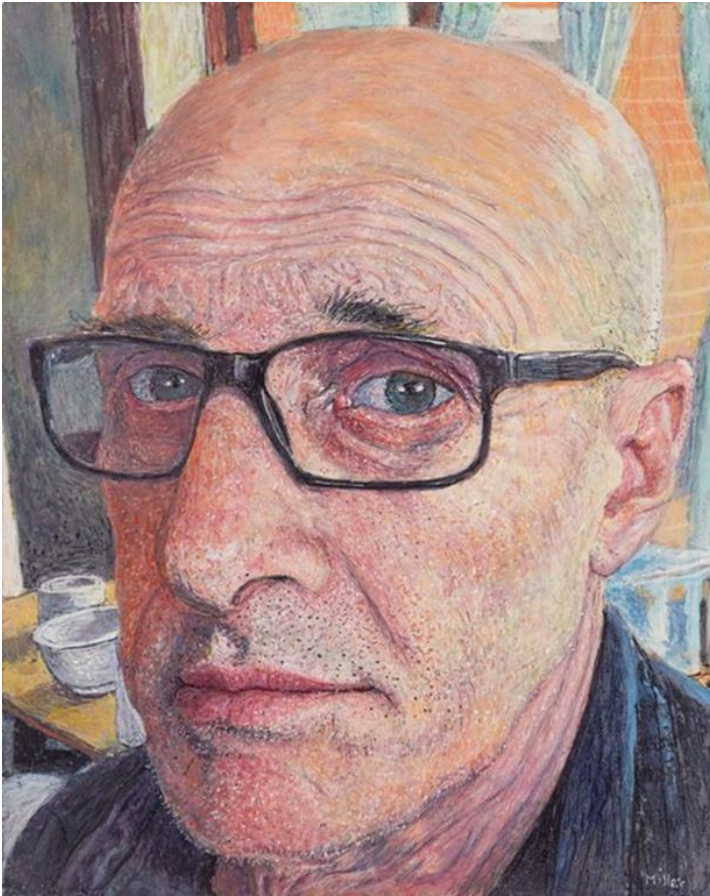


Paul S Miller

Greg (Greg Warburton), 2014 (Archibald Prize)

Egg tempera on wooden panel

25 x 20 cm

Information from Paul S Miller

'The portrait of Greg is done in egg tempera on a wooden panel only 25 × 20 cm. Within this small and intimate space I wanted the viewer to feel very close to him, as if engaged in a private conversation. The clarity of the fine brushwork, the building up of crosshatched marks and small washes of transparent colour that refine and adjust the surface are most important. The strength of the portrait, I believe, lies in the moment of engagement between viewer and subject.'

Studying

- Research **egg tempera** technique and its use in Western Art
- Research Canadian Realist painters: Alex Colville, Christopher Pratt and Tom Forrestall
- Research American artist Andrew Wyeth

Making

Produce an intimate portrait of a friend or family member. Use a digital camera to record their face in some familiar surroundings. Edit your chosen image with a cropping tool to see how much of the image can be removed for it to still be read as a portrait. On white paper develop this portrait as a drawing, using coloured pencil and crosshatching to build subtle layers of tone and colour.