

MEDIA RELEASE: FOR IMMEDIATE RELEASE

***Seeing Science* 15 September to 3 November 2017**

The exhibition will be launched from 2-4pm, on Saturday 16 September by **Ms Kim McKay AO**, Director & CEO Australian Museum.

The Grace Cossington Smith Gallery is delighted to announce *Seeing Science*, an exhibition presenting works by some of Australia's finest artists examining the important scientific ideas and questions of our time. The works in the exhibition provide a perfect visual avenue for exploring the wonder of science and engaging with scientific concepts and thinking.

Curated by Mary Faith and Lisa Jones, the exhibition comprises work in a range of disciplines from **Julie Brooke, Maria Fernanda Cardoso, Julia Davis, Janet Laurence, Helen Pynor, Caroline Rothwell, Jack Stahel and Shona Wilson.**

These artists take the questions, tools, research processes and contexts of science, and explore and repurpose them in their work.

In the introduction to the *Seeing Science* catalogue Therese Kenyon, artist, curator and program coordinator at Eramboo Artist Environment, states, "The eight artists in this exhibition have sought ways to engage with social and political issues through engaging in conversations with scientists. They seek current scientific knowledge within our world but hold separately the imaginative process that maintains a sense of otherworldliness and wonder in their ideas and artworks."

The reliance of science and art on enquiry and creative thinking, and their encounters with inspiration and visualisation, provides a mutual mindset. While science has a responsibility to uncover the facts, art can take these and elaborate with empathy and imagination. Art has the ability to interpret and respond to an emotional tenor, provoking questions and presenting ideas to a wide audience.

As Tim Minchin wrote in the foreword to *The Best Australian Science Writing 2013*, "There is no conflict between art and science: only the wide-eyed pursuit of cool ideas." We hope you will join us to share the "cool ideas" of our artists.

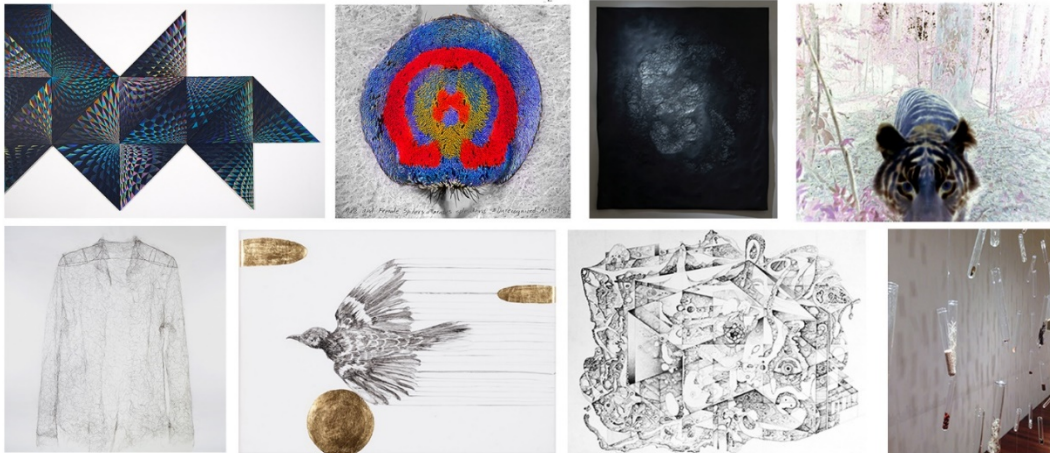
Short Statement 50 Words

Seeing Science

15 September to 3 November 2017

Artists **Julie Brooke, Maria Fernanda Cardoso, Julia Davis, Janet Laurence, Helen Pynor, Caroline Rothwell, Jack Stahel and Shona Wilson** take the questions, tools, research processes and contexts of science, and explore and repurpose them in their work. Launched on 16 September by Ms Kim McKay AO, Director & CEO Australian Museum.

Artworks: High resolution images available



Clockwise from top left:

Julie Brooke *Extended Labyrinth* (2015). Gouache, pencil and acrylic on board, dimensions variable

Maria Fernanda Cardoso *Actual II*, 2015, Pigment print on premium paper 300gsm 152.40cm x 154.40cm x 5.70cm, Edition 7 Digital imaging in collaboration with Geoff Thompson and Andy Wang, Queensland Museum.

Julia Davis *Ru(a)pture #6*, 2016 Plastic , Volcanic Tephra, 170cm x 170cm

Janet Laurence *Fabled, Sumatran Tiger (panthera tigris sumatrae)* (2011), archival ink on archival paper, 60cm x 48cm (framed). Commissioned by Sherman Contemporary Art Foundation, Sydney.

Shona Wilson *Seed Rain*, 2016, repurposed test tubes, fishing line, seeds, audio file and written text on wall, dimensions variable, collaboration with and Dr Si-Chong Chen.

Jack Stahel *Drawn Hypothesis 10.2 (A continuous self-dissection)*

Caroline Rothwell *Regent Honeyeater (Xanthomyza phrygia)*, 2013, Ford Futura MKII Conquest exhaust emission, acrylic binder medium and 23 carat gold on primed canvas, 25.5cm x 36cm x 2cm

Helen Pynor *Inhale I*, 2006, knitted human hair, 90 x 59 x 24

All artworks © the artist.

The **Grace Cossington Smith Gallery** is a not-for-profit gallery, run by Abbotsleigh, serving the public through free admission and an education program. The Gallery is open Monday to Friday from 10 am-5 pm and Saturday from 9 am-4 pm. Enter via Gate 7, 1666 Pacific Highway Wahroonga. Phone: 02 9483 7878

MEDIA contact: Mary Faith or Lisa Jones 02 9473 7878; gcsgallery@abbotsleigh.nsw.edu.au