



A B B O T S L E I G H

# Abbotsleigh's Interconnections

## 20 July 2015

the art and influence of Marian Clarke

Teachers: Alfred Coffey, Eirene Mort and Janna Bruce

Students: Grace Cossington Smith, Mary Turner,  
Mollie Douglas and Nancy Goldfinch



Senior School and Administration 1666 Pacific Highway (Cnr Ada Avenue) Wahroonga telephone (02) 9473 7777

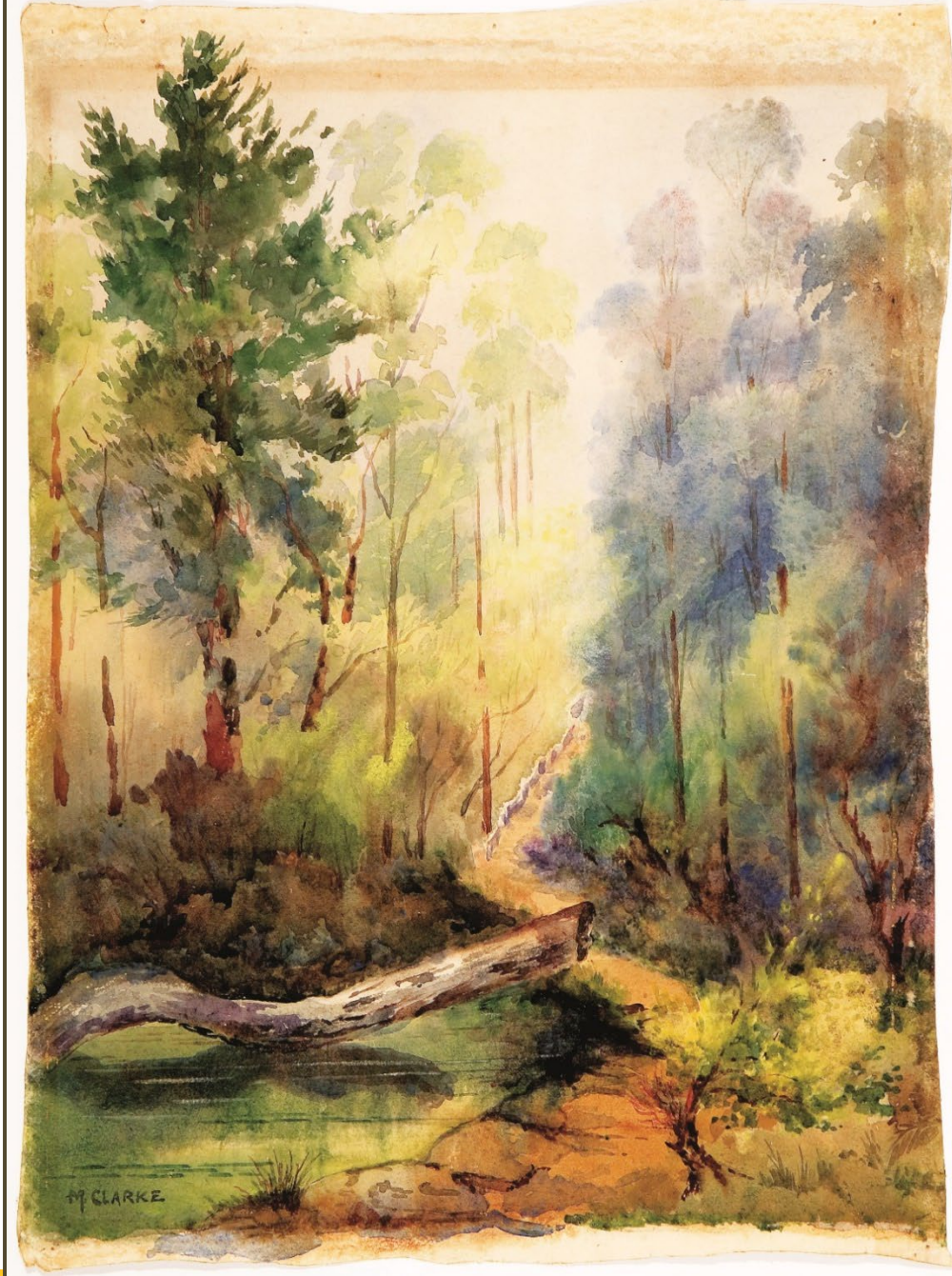
Junior School 22 Woonona Avenue Wahroonga NSW telephone (02) 9473 7700

[www.abbotsleigh.nsw.edu.au](http://www.abbotsleigh.nsw.edu.au)



Marian Clarke portrait by Tom Roberts





HP CLARKE



*The Big Pool, Abbotsleigh c1900*

*The Alhambra, c1924*

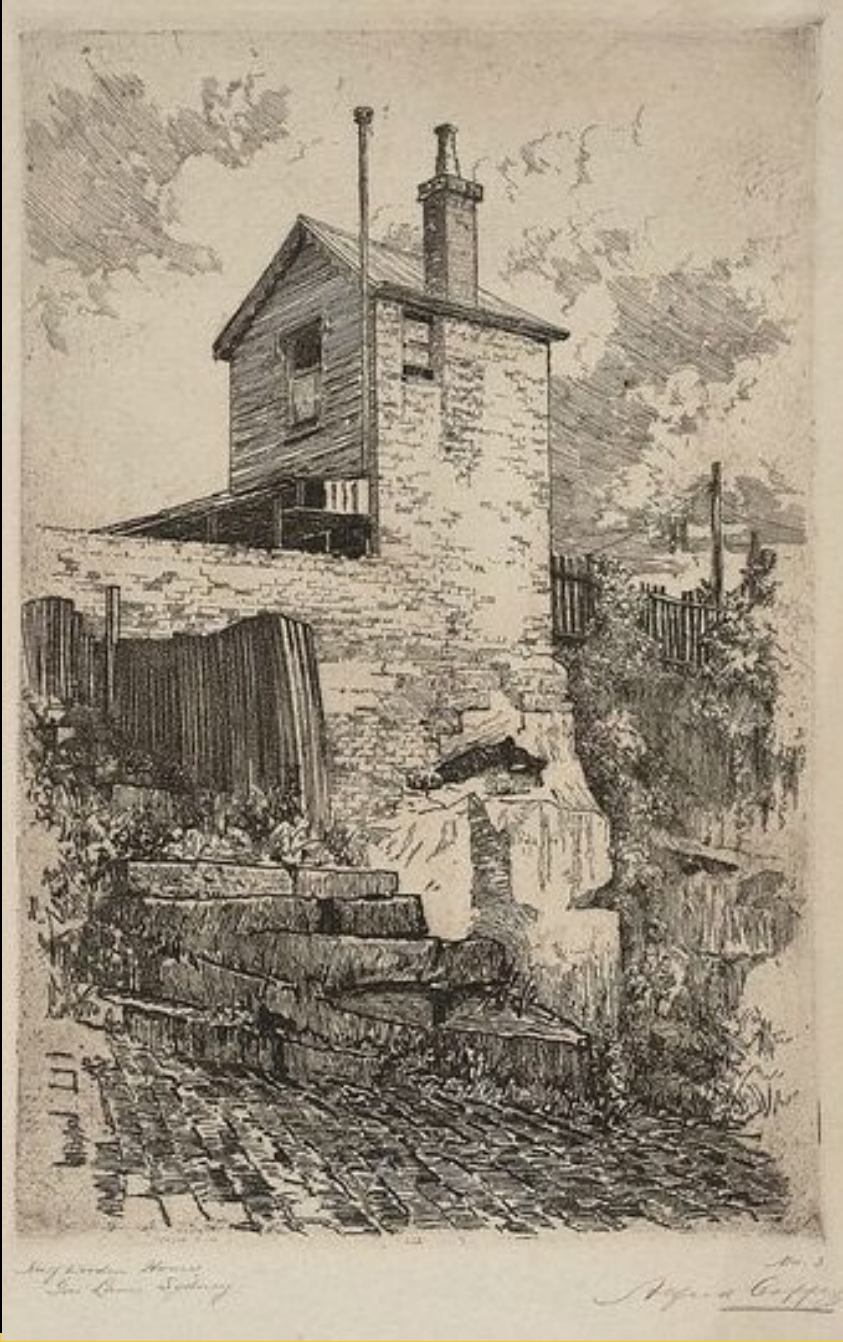


Marian Clarke c1913

Marian Clarke at St Mark's Square, Venice, 1924



St Mary's Cathedral, Marian Clarke c1930



Half wooden house, Gas Lane, Sydney,  
Alfred Coffey, nd (AGNSW collection)





*Morea Island, from Papute, Tahiti, Alfred Coffey*



*Watching the Waves*, Alfred Coffey 1918, Abbotsleigh Collection



Alfred Coffey's drawing class in 1913



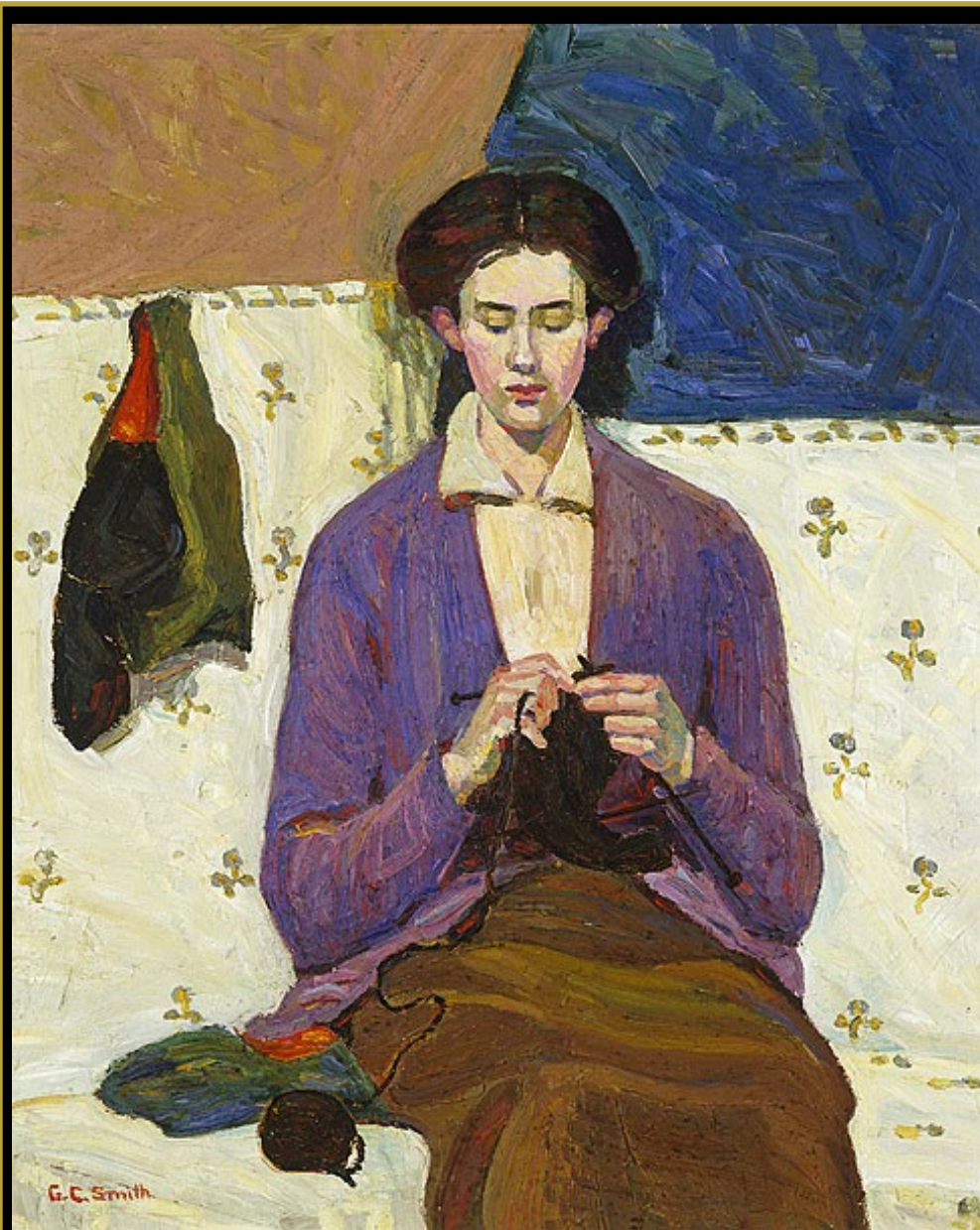




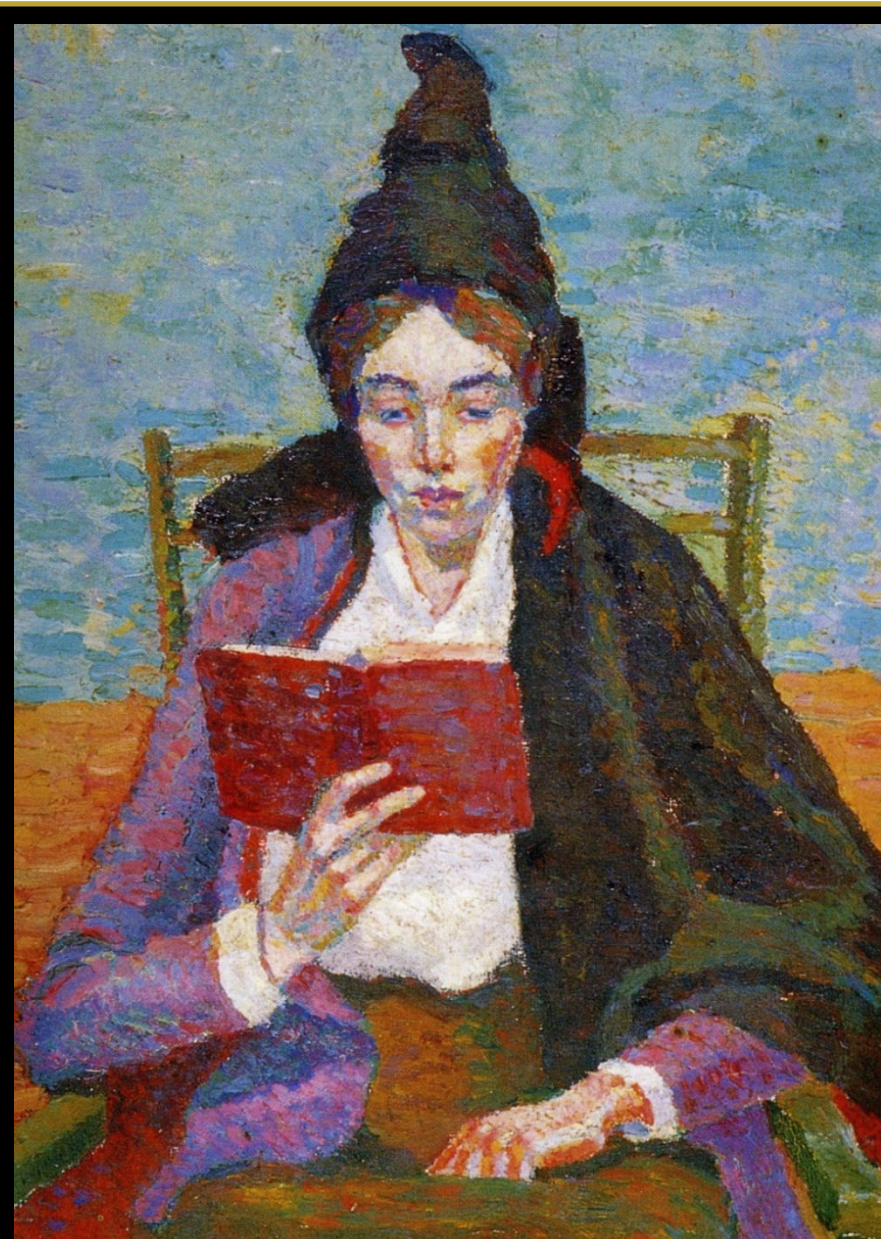
Grace was inspired by Marian Clarke and learnt drawing from Alfred Coffey

From 1932 Grace exhibited every few years with the Macquarie Galleries in Sydney





*The Sock Knitter, 1915*



*The School Cape, 1919*



Grace Cossington Smith



Purchased by the 'Gallery  
Viewing Group' of the  
ABBOTSLEIGH ARTS ASSOC.  
for presentation to the  
Artist's Old School.



*The Curve of the Bridge (from Milsons Point), c1927-30, Grace Cossington Smith*



Eirene Mort, taught at Abbotsleigh from 1914-15 then 1918-1935





EIRENE MORT'S AUSTRALIAN ALPHABET



Published in 1986, for the Australian National Gallery Canberra



PLATE XXIV.

Eirene illustrated Florence Sulman's *A Popular Guide to the Wild Flowers of New South Wales* (1913, 1914). Florence was an early Abbotsleigh student (1890-1895) and daughter of the respected architect Sir John Sulman





Miss Ruth Main's art class, 1941



Mary Turner OAM

Mary (Killen) attended Abbotsleigh from 1936-1943 and her art teacher was Eirene Mort.

Mary co-directed the Macquarie Galleries at 40 King Street in Sydney from 1956 - 1978



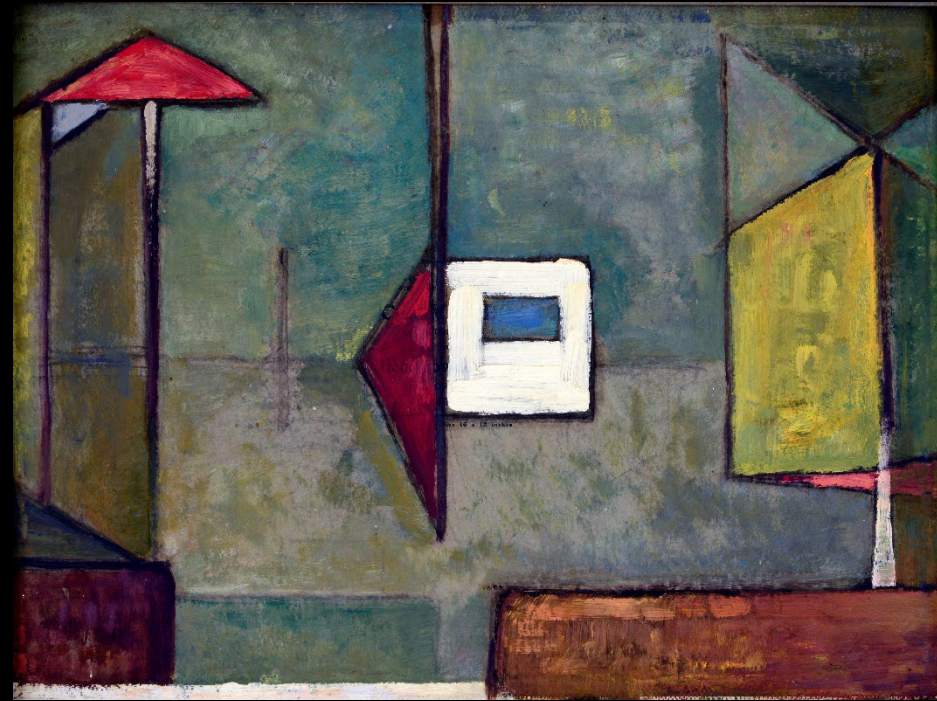
Mary Turner OAM







*White Gum at Lindfield, 1929 Watercolour*



*Painting, 1961, Oil on canvas*

Nancy's school art teacher was Eirene Mort.  
Nancy exhibited with the Macquarie Galleries



Nancy Goldfinch attended Abbotsleigh from 1924-1928



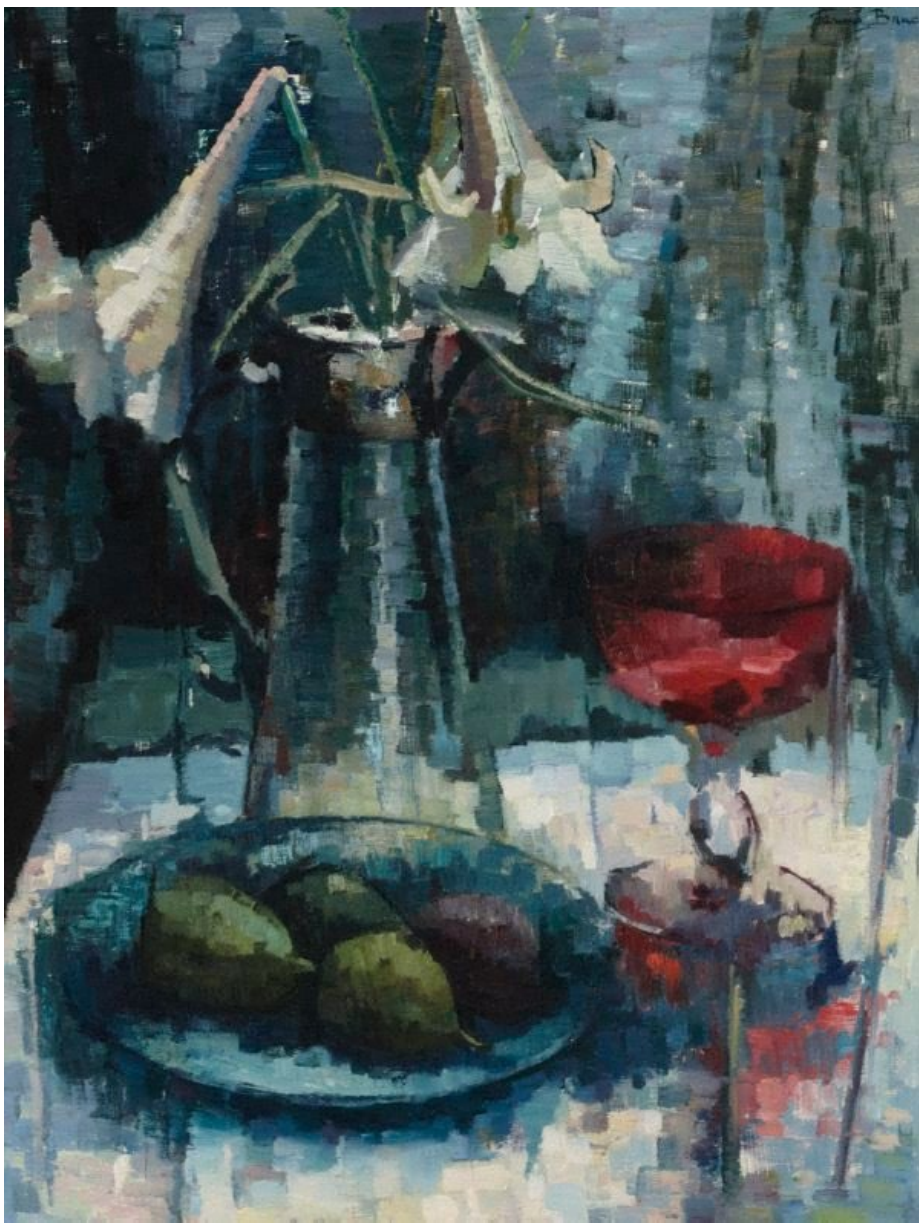
David Moore photograph of Mollie Douglas tea set Exhibited Macquarie Galleries 1962



Mollie Douglas attended Abbotsleigh from 1927-1938



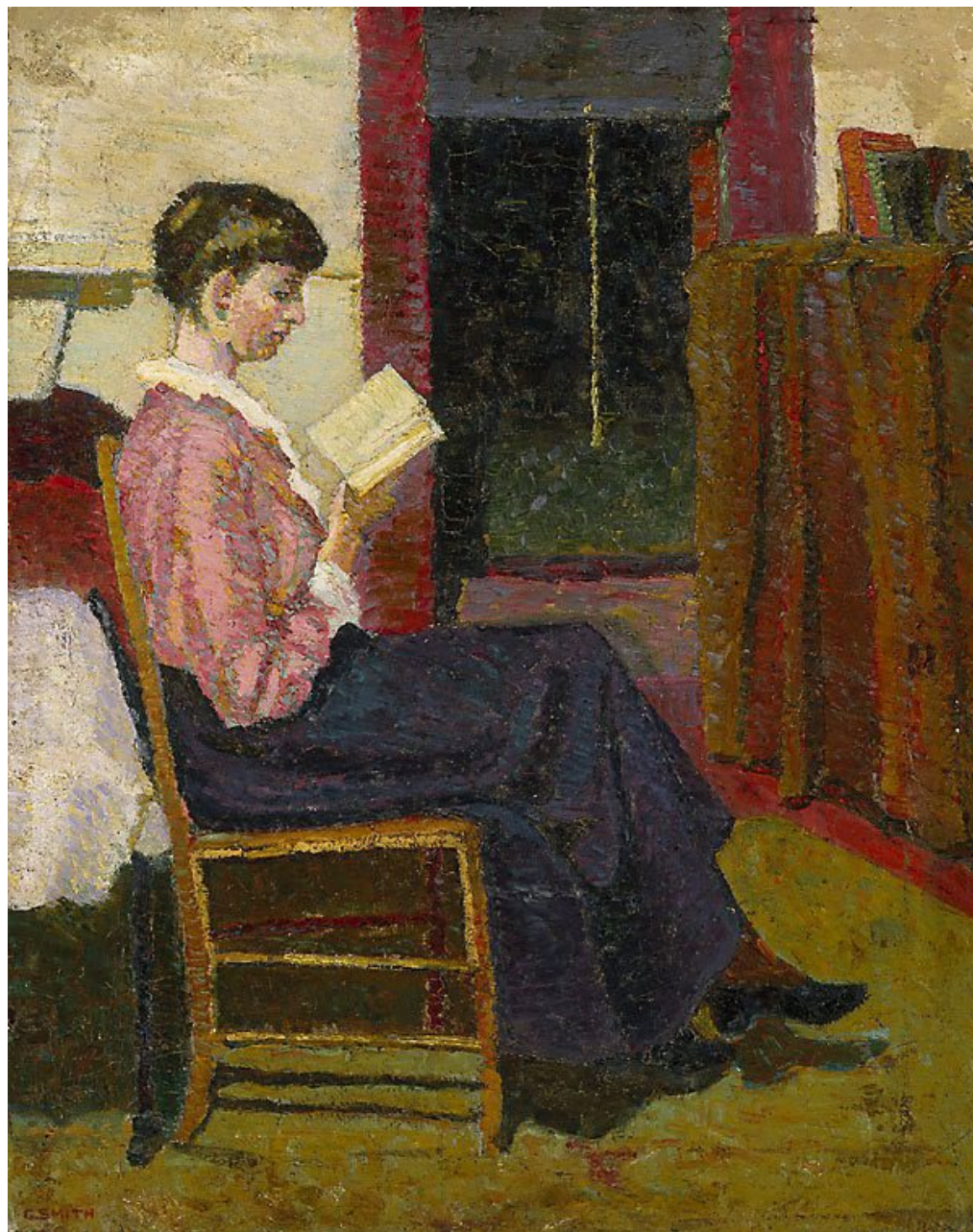
Janna Bruce   Abbotsleigh Art Department from 1954-1976



*Lilies and Figs, 1958 (AGNSW collection)*



*Yellow House, McCarrs Creek*





Vindin House 1933



VINDIN HOUSE.





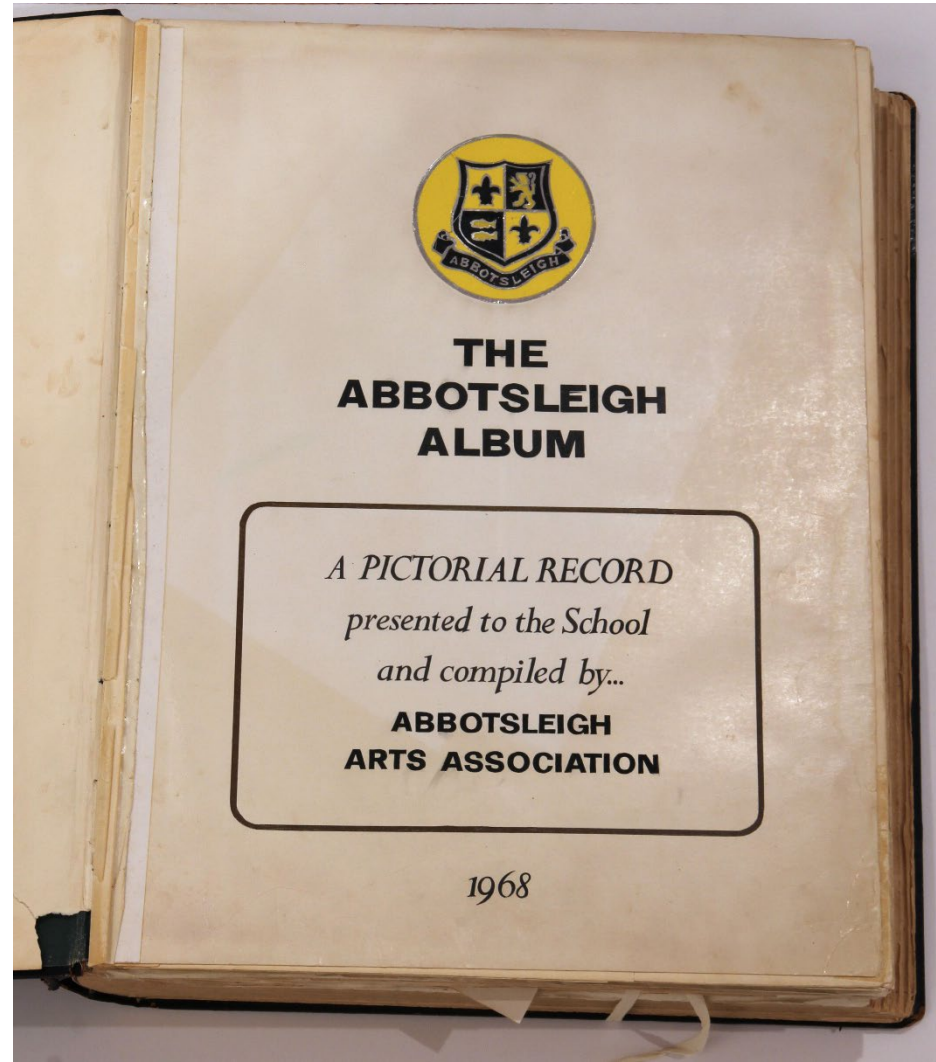
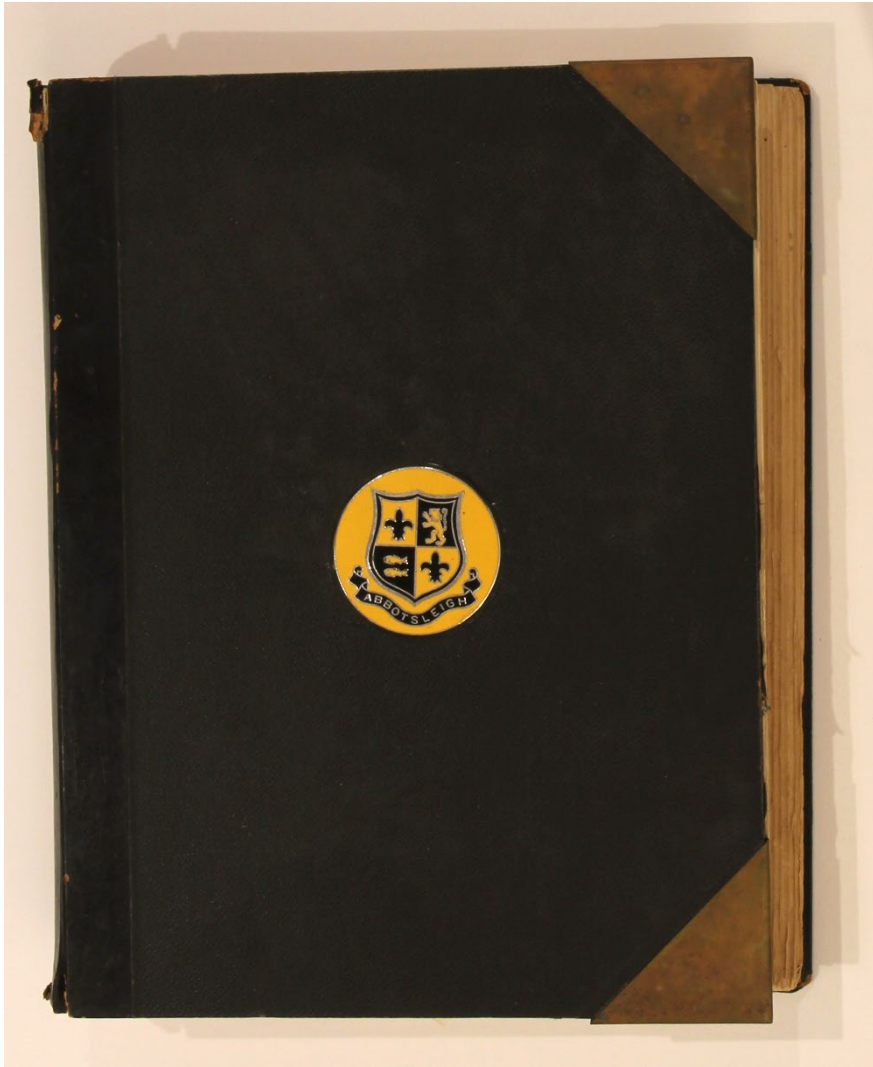
Vindin House Dormitory 1933







Vindin today



The Abbotsleigh Album



Grace Cossington Smith, 1972 – patron of Abbotsleigh Arts Assoc

# Headmistress' Report

## 1971

With a deposit of \$500, a special fund has been opened, with Council's approval, to enable one of the long-term aims of the Arts Association—namely, "to establish a gallery and repository for objets d'art in the School"—to become a reality. This is the most ambitious project undertaken by the Association and will provide a worthwhile and rewarding task for the future.



ENTRY CARD

LOAN EXHIBITION AND AUCTION

*"A Century of Australian Art"*

Official opening by  
MR. PETER LAVERTY

Friday, 22nd September, 1972 at 7.30 p.m.

In Everett Hall, Abbotsleigh Junior School  
Woonona Avenue, Wahroonga  
(off Pacific Highway)

NAME.....

Please present this card.

Vogue Australia December/January 1971

### VOGUE'S NOTEBOOK



*In Wahroonga, a superb show of paintings lent by private collectors and a fund-raising art auction*





A.A.A. PATRON MISS MOLLIE DOUGLAS.

MRS. BARBARA FIRTH. A.A.A. FOUNDER.



"WESTERN HOMESTEAD." - MAX BOYD.



MR. DAVID BAYLISS. -  
TREASURER A.A.A.

MR. DICK WALLACE. -  
EXHIBITION ORGANISER.





GRACE COSSINGTON SMITH GALLERY



Vindin House 2015