

Media Release

## SENSE OF COLOUR

5 October to 2 November

Sioux Garside and Rachel M Scott

This exhibition delves into the use of colour through the lens of two artists, exploring its nature across time and culture. As noted in the accompanying catalogue by Pamela Hansford, “only one thing is certain, colours are true nomads just as much at home on Goethe’s colour wheel (1809) and a K-Pop stage. It can be a challenge keeping up with colour.” The works of Garside and Scott reflect this dynamic and ever-evolving presence, revealing colour’s transformative power.

**Sioux Garside** creates abstract paintings that explore the colour spectrum through the wavelengths of light perceived in a rainbow. Her work seeks shifting possibilities beyond the blue horizon, using geometric forms to activate spatial fields. Garside states, “As an abstract painter, I search for shifting possibilities beyond the blue horizon.” She resonates with British artist Winifred Nicholson’s (1893–1981) belief that “colours wish to fly, to merge, to change each other by their juxtapositions—to radiate, to shine, to withdraw deep within themselves.”

**Rachel M Scott** is reconciling Art Nouveau, Surrealism and Abstraction in 21st century paintings. Her vibrant hybrids of colour use techniques such as pouring, folding, and layering to harmonize translucency, opacity, and geometric forms, creating a radiant visual experience. Scott describes her process: “Freely taking existing painting techniques as found instruments, I play with scale, rhythm, and intonation.”

Accompanying the exhibition is a catalogue essay by Pamela Hansford. Hansford is a Sydney based writer and art historian.

### Short statement

The exhibition **Sense of Colour** explores the nature of colour across time and culture and as Pamela Hansford notes: “Colours are true nomads, just as much at home on Goethe’s colour wheel and a K-Pop stage.” Sioux Garside and Rachel M Scott’s works reveal colour’s transformative power through abstract forms, dynamic hues, and innovative techniques.

 Grace  
CossingtonSmithGallery  
Abbotsleigh,  
Gate 7 1666 Pacific Highway,  
Wahroonga NSW 2076

Gallery opening times:  
Tuesday to Saturday 10am to 5pm

### Social Media:

f <https://www.facebook.com/gcsgallery>  
@gcsgallery

MEDIA contact:  
Mary Faith, Lisa Jones 02 9473 7878  
[gcsgallery@abbotsleigh.nsw.edu.au](mailto:gcsgallery@abbotsleigh.nsw.edu.au)

High resolution images are available.

The Grace Cossington Smith Gallery is a not-for-profit gallery, run by Abbotsleigh, serving the public through free admission and a changing exhibition program. Enter via Gate 7 1666 Pacific Highway Wahroonga.

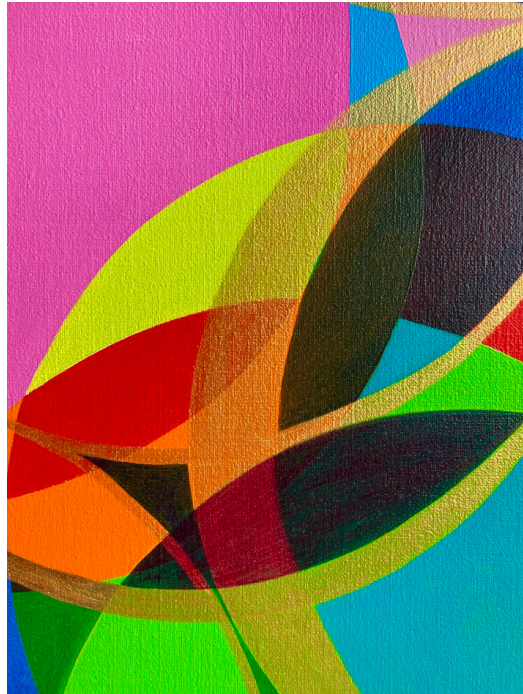
The Grace Cossington Smith Gallery respects and acknowledges the Traditional Custodians of this land and acknowledges the unique status of Aboriginal and Torres Strait Islander people whose deep connection to culture and customs have cared for this country.

## ARTISTS

**Rachel M Scott** is a Sydney artist who has exhibited internationally and been the recipient of numerous scholarships. She holds a PhD from the University of Sydney. <https://www.rachelmscott.com/>

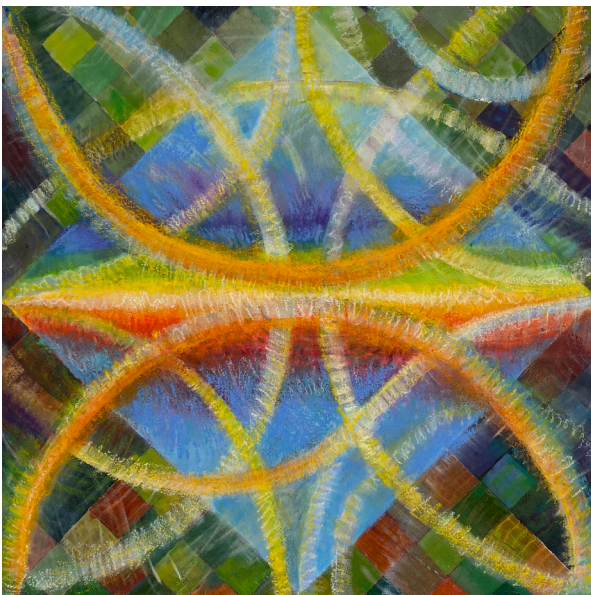


*Untitled*  
2021  
Oil on linen  
40 x 50 cm



*Untitled*,  
2018.  
Oil on linen,  
20 x 30 cm.

**Sioux Garside** is an artist based in the Hunter Valley and holds a Master of Arts in Art History from Hunter College, City University of New York.



*Rainbow in curved air*  
2024  
acrylic and oil stick on board  
40.5 x 40.5 cm



*Supersymmetry*  
2024  
acrylic and oil stick on board  
61 x 61 cm