



ABBOTSLEIGH

GS Grace
CossingtonSmithGallery

Small Matters

5 to 28 September 2024

The Australian
Society of Miniature
Art presents an
insight into the
contemporary
miniature



AUSTRALIAN
SOCIETY OF
MINIATURE
ART • (NSW)



Eva Barry, Elise Benamane, Marina Bishop, Ruth Bosveld,
Regina Brewster, Coral Briggs, Warwick Buddle,
Judy Buist, Jan Hook, Leonora Howlett, Kate Jacobsen,
Sharyn Jones, Michaela Laurie, Penny Levett, Sandra Lien,
Mary Marshall, Jennifer O'Young, Nina Paine, Vicki Ratcliff,
Graeme Rudd, Di Sincock, Lee Sinha, Pam Slattery,
Judy Smith, Madeleine Szymanski, Anna Warren,
Jeanette Watson, Sandra Williams

The Australian Society of Miniature Art was conceived in 1984 by Australian artist Janine Bravery, with the first official meeting being held on 21 June 1985.

Members of the society work across a range of media, in both traditional forms such as watercolour, oil or acrylic painting, printmaking, drawing and mixed media as well as abstract work, sculpture and hand-made books.

Many of the artists are professionals of long-standing who reside Australia-wide. There are award-winning artists who regularly exhibit larger works but who have an affinity for the discipline of working in miniature. Standards are very high, with rigorous selection for exhibiting membership as well as for entry to each exhibition. The exhibitions always have an interesting mix of traditional and modern.

A good miniature work can convey all the beauty and power of a larger work of art but has the added appeal of being a particularly personal object. Miniatures draw the viewer in for a closer look.

History

The art of the miniature is many hundreds of years old. In the Western world the earliest examples can be found in the illuminated capital letters of church manuscripts, and the portrait miniature became important as a record of loved ones, particularly in the Romantic era. Miniatures also have a long history in India, Iran and Russia.

Definition

The Australian Society of Miniature Art definition for a two-dimensional work is that the perimeter of the actual art work must not exceed 40cm. A three-dimensional work must not exceed 15cm in any direction, and the front cover of a handmade miniature book must have a perimeter of no more than 40cm.

<https://asmansw.com/>

Artists

Eva BARRY	<i>Labyrinth</i> , acrylic, 8 x 12	
	<i>Morning Light</i> , ink, 10.5 x 9.5	
	<i>Evening Light</i> , mixed media (acrylic collage), 12 x 8	
	<i>Discovery</i> , acrylic, 12 x 8	
Elise BENAMANE	<i>View from the Hill</i> , oil on canvas, 10 x 10	
	<i>Heritage Park</i> , oil on canvas, 10 x 10	
	<i>At the Top, Pioneer Place</i> , oil on canvas, 10 x 10	
	<i>Lavender Fields, Tasmania</i> , oil, 10 x 10	
	<i>Magic Forest</i> , etching – hand coloured, 5.8 x 14.2	
	<i>Forest Hillside</i> , etching – hand coloured, 9.5 x 10	
Marina BISHOP	<i>Lost City</i> , mixed media, 10 x 10	
	<i>Shakespearean</i> , mixed media, 10 x 10	
	<i>Ocean Surge</i> , mixed media, 7 x 13	
	<i>Chasm Rapids</i> , acrylic, 10 x 10	
	<i>Coral Cliff</i> , acrylic, 10 x 10	
	<i>Bridge</i> , mixed media, 10 x 10	
Ruth BOSVELD	<i>The Patriot</i> , gouache, 9 x 10.5	
Regina BREWSTER	<i>Feathertail Glider</i> , gouache, 9.5 x 7.5	
	<i>Echidna Crossing</i> , gouache, 9.8 x 9	
Coral BRIGGS	<i>Waves</i> , acrylic, 7 x 11.5	
	<i>Eruption</i> , acrylic, 9 x 8.5	
	<i>Coastal Pools</i> , acrylic, 7.5 x 9.5	
	<i>Pots</i> , acrylic, 9 x 10.5	
Warwick BUDDLE	<i>Poppies</i> , gouache, 10 x 10	
	<i>Balinese Village</i> , graphite pencil, 10 x 10	
	<i>Gondolas, Venice</i> , pen and gouache, 10 x 10	
Judy BUIST	<i>Falling Apart</i> , collage, 8.5 x 6.5	
	<i>Prayer Shawl for the Ancients</i> , fabric and acrylic, 8 x 9	
	<i>Fragment 2</i> , etching and collage, 8 x 8.5	
Jan HOOK	<i>Still Life – Blue</i> , oil, 9 x 8	
	<i>Still Life – Red</i> , oil, 9 x 8	
	<i>Still Life – Yellow</i> , oil, 9 x 8	
	<i>Cyclamen</i> , oil on linen, 8 x 9	
	<i>Black, White and Red</i> , monoprint, cotton, 5 x 5	

Leonora HOWLETT	<i>Places Come and Gone</i> , gouache, 10 x 10	
	<i>Places I Knew</i> , gouache, 8 x 12	
Kate JACOBSEN	<i>Along the Foreshore 1</i> , coloured pencil and ink, 8 x 8	
	<i>Along the Foreshore 2</i> , coloured pencil and ink, 8 x 8	
	<i>Philodendron Sp.</i> etching, hand coloured, 5 x 5	
	<i>Coleus Sp.</i> etching, hand coloured, 5 x 5	
	<i>Acanthus Mollis</i> , etching, hand coloured, 5 x 5	
	<i>Cucurbita Sp.</i> etching, hand coloured, 5 x 5	
Sharyn JONES	<i>Ocean Cave, Victoria</i> , monoprint, 8 x 12	
	<i>Autumn Avenue</i> , oil, 9 x 11	
	<i>The Bumble Tree</i> , oil, 9 x 11	
	<i>Little Jetty</i> , oil, 8 x 12	
	<i>Rocky Foreshore</i> , oil, 8 x 12	
Michaela LAURIE	<i>Happy Visitor</i> , gouache, coloured pencil, pigment pen and watercolour, 10 x 10	
	<i>Going to Town</i> , gouache, coloured pencil, pigment pen and watercolour, 10 x 10	
	<i>Hello You</i> , gouache, coloured pencil, pigment pen and watercolour, 10 x 10	
	<i>Hello You Too</i> , gouache, coloured pencil, pigment pen and watercolour, 10 x 10	
	<i>Cloisonne Dreaming</i> , gouache, coloured pencil, pigment pen and watercolour, 10 x 10	
	<i>Magpie Morning</i> , gouache, coloured pencil, pigment pen and watercolour, 10 x 10	
Penny LEVETT	<i>Waterfowl, Lake Banff</i> , watercolour and pencil, 10 x 10	
	<i>Out to Lunch</i> , watercolour, 10 x 10	
	<i>Ghats on the Ganges</i> , watercolour, 11.5 x 9	
	<i>Angkor Wat (Siem Reap)</i> , watercolour, 7.75 x 12.5	
Sandra LIEN	<i>Blessing</i> , watercolour, 7.3 x 7	
	<i>Fortune</i> , watercolour, 7.3 x 7	
Mary MARSHALL	<i>Sydney Harbour Bridge View</i> , watercolour, 11.4 x 8.8	
	<i>Poppies</i> , watercolour, 11.4 x 8.8	

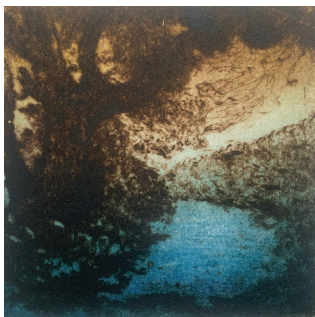
Jennifer O'YOUNG	<i>The Stitches of Life's Story</i> , original hand-sewn threads, 7.5 x 9	
	<i>The Stitches of Life</i> , original hand-sewn threads, 7 x 7	
	<i>Ethereal 2</i> , hand-pulled original print, 8 x 9.4	
	<i>The Lakes Calm</i> , drypoint and monotype, 10 x 10	
	<i>Into the Depths</i> , drypoint and monotype, 13.5 x 6	
	<i>Japanese Garden</i> , acrylic, 7 x 5	
Nina PAINE	<i>Norah Head Lighthouse 1</i> , watercolour, 14 x 6	
	<i>Norah Head Lighthouse 2</i> , watercolour, 6 x 14	
	<i>Norah Head Lighthouse 3</i> , watercolour, 6 x 14	
	<i>Norah Head Lighthouse 4</i> , watercolour, 14 x 6	
	<i>Norah Head Lighthouse 5</i> , watercolour, 14 x 6	
	<i>Norah Head Lighthouse 6</i> , watercolour, 6 x 14	
Vicki RATCLIFF	<i>Sunday Crew 1</i> , oil on paper, 7 x 13	
	<i>Sunday Crew 2</i> , oil on paper, 7 x 13	
	<i>Big Swell</i> , oil on paper, 10 x 10	
	<i>Into the Bay</i> , oil on paper, 10 x 10	
	<i>A Bit Chilly</i> , oil on paper, 10 x 10	
Graeme RUDD	<i>The Last Iceberg</i> , watercolour, 8.3 x 11	
	<i>Meltdown</i> , watercolour and ink, 9.8 x 9.8	
	<i>Fluoro Forest</i> , watercolour, 8.3 x 10.2	
	<i>Parrot Fashion</i> , collage – paper, 10 x 10	
	<i>Floating Palace</i> , acrylic, 10 x 17	
	<i>Paired Up</i> , watercolour, 8.7 x 10	
Di SINCOCK	<i>Ancient Trade Routes</i> , copper plate etching, 6 x 14	
	<i>Le Petit Matador</i> , watercolour/gouache/pen, 6 x 6	
	<i>The Pomegranate Cape</i> , watercolour/gouache/pen, 10 x 8	
	<i>Au Cachet Parisien</i> , copper plate etching, 9 x 7	
	<i>L'amure de Sir Galahad</i> , pen/watercolour, 9.5 x 6.5	
	<i>Medieval Parade Fashions</i> , copper plate etching/watercolour/gouache, 9.5 x 9.5	
Lee SINHA	<i>Street Art – Vietnam</i> , acrylic, 5.3 x 8.5	
	<i>Stray Leaves</i> , acrylic, 14 x 6	
	<i>The Escape</i> , acrylic, 5.5 x 10.7	
	<i>The View</i> , acrylic, 8 x 5	
	<i>Togetherness</i> , acrylic, 10 x 7.5	
	<i>The Old Shed</i> , acrylic, 10 x 7.5	

Pam SLATTERY	<i>Black-tailed Native Hen</i> , watercolour on canvas, 10 x 10	
	<i>Cooling Down</i> , watercolour on canvas, 10 x 10	
	<i>Lyrebird</i> , watercolour on canvas, 10 x 10	
	<i>Galahs and Gum Tree</i> , watercolour on canvas, 10 x 10	
	<i>In a Southern Garden</i> , artist's book, watercolour, 5.5 x 7	
	<i>The Little Book of Australian Rainforest Birds</i> , artist's book, watercolour, 5 x 70	
Judy SMITH	<i>Fire Sky</i> , etching, 12.5 x 7	
	<i>Riverview II</i> , etching, 11.3 x 8	
	<i>Mountain Road</i> , etching, 12 x 8	
	<i>Smoke Sky II</i> , etching, 12.5 x 7	
	<i>Yellow Dawn II</i> , etching, 13 x 7	
Madeleine SZYMANSKI	<i>Bush River</i> , watercolour, 9.2 x 7	
	<i>A Special Place</i> , watercolour, 9.2 x 7	
	<i>Summer Afternoon</i> , collagraph, 7.7 x 11	
	<i>Moonlight Bush</i> , collagraph, 10.7 x 7.5	
	<i>Riverbank</i> , collagraph, 10.2 x 8	
Anna WARREN	<i>Flow 1</i> , pencil and coloured pencil, 8.5 x 10	
	<i>Flow 2</i> , pencil and coloured pencil, 8.5 x 10	
	<i>Flow 3</i> , pencil and coloured pencil, 8.5 x 10	
	<i>Flow 4</i> , pencil and coloured pencil, 8.5 x 10	
	<i>Flow 5</i> , pencil and coloured pencil, 8.5 x 10	
	<i>Flow 6</i> , pencil and coloured pencil, 8.5 x 10	
Jeanette WATSON	<i>A Bigger Bouquet</i> , watercolour pencil, 8.5 x 8.5	
	<i>Maelstrom</i> , mixed media, 9 x 6.9	
	<i>Seven Veils or More</i> , mixed media/collage, 7.4 x 5.6	
	<i>Cocky Rascals</i> , mixed media/collage, 10.3 x 6.8	
	<i>Too Many Pieces</i> , watercolour and graphite, 8 x 6	
	<i>Floral Fantasy</i> , prismacolor pencil, 6.9 x 9	
Sandra WILLIAMS	<i>Tall Trees 1/3</i> , etching (aluminium plate), 10 x 10	
	<i>Journey Men 1/2</i> , etching (aluminium plate), 10 x 10	
	<i>Dark Forest</i> , monotype, 10 x 10	
	<i>Coastal Scrub</i> , monotype, 10 x 10	

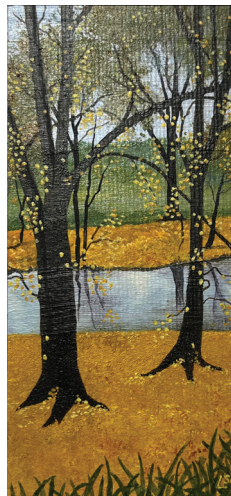
All measurements are in centimetres.



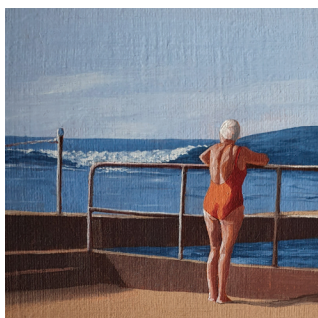
Marina Bishop, *Lost City*, mixed media, 10 x 10 cm



Jennifer O'Young, *The Lakes Calm*, drypoint and monotype, 10 x 10 cm



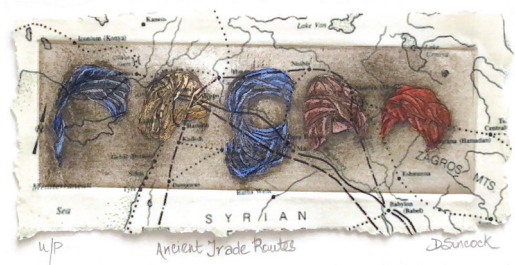
Lee Sinha, *Stray Leaves*, acrylic, 14 x 6 cm



Vicki Ratcliff, *Big Swell*, oil on paper 10 x 10 cm



Anna Warren, *Flow 2*, pencil and coloured pencil, 8.5 x 10 cm



Diane Sincock, *Ancient Trade Routes*, copper plate etching, 6 x 14 cm



Pam Slattery, *In a Southern Garden*, artist's book, watercolour, 5.5 x 7 cm



Gallery hours Tues to Sat 10 am-5 pm | Free entry
Gate 7, 1666 Pacific Highway, Wahroonga | 02 9473 7878
gcsgallery@abbotsleigh.nsw.edu.au | www.gcsgallery.com.au
An Anglican Pre K-12 Day and Boarding School for Girls

*The Grace Cossington Smith Gallery acknowledges the Dharug people
as the Traditional Custodians of the land upon which the gallery rests.
We acknowledge the Elders, past, present and emerging.*